

OUR TREASURER'S MESSAGE

Firstly, a big thank-you to all who have supported us this year. WULUGU relies entirely on the generosity of our supporters and grants made to us from other charities for specific projects.

“....charities who might have offered us financial support have been unable to commit themselves this year due to the Covid-19...”

This year has been a difficult year in that many other charities who might have offered us financial support have been unable to commit themselves this year owing to their inability to hold fund-raising events due to the Covid-19 crisis and their need to divert help to essential Covid-related projects such as provision of PPE. Nevertheless, we have received some grants and with our own funds have, with your help, enabled us to continue our work. In particular this year we

have completed major repair and rebuild projects at Wayamba (page 5) and Cheshugu (page 4) Primary Schools. At Guomo (page 4), we have opened a wonderful six-classroom school with teacher room and store thanks to Fondation Eagle.

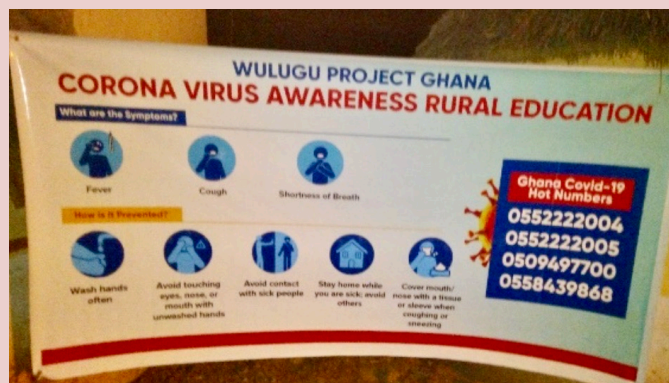
We are very grateful to those of you who support us generously on a regular basis and those of you who donate via a monthly standing order enabling us to budget our funds and estimate our likely income.

Our 100 Club is being relaunched this year to bring it up to date financially and if you wish to join this scheme please complete the application form on the insert page.

Harold Pond

MARCH 2020 - COVID ARRIVES IN NORTHERN GHANA

WULUGU PROVIDES A HELPING HAND WITH ADVICE & CLEAN WATER



Our volunteers in Ghana were aware that the many communities in remote villages had no access to Covid information. Our Ghana team took the initiative to reach remote villages and help them to understand the Covid risk. They took a generator and simple power-point and used the local languages.

One of the results of this was that they were telling communities to wash their hands in clean water, using soap. Soap is not a problem. However, clean water has never been available in most of the villages.

WULUGU provided a helping hand for clean water supplies by financing three boreholes (read more about this story on page 7).

IN THIS ISSUE.....

Page 1: Treasurer's message and Covid arrives in Northern Ghana

Page 2: Thanks, Trade Aid and WULUGU tackling infection & poverty together

Page 3: Rotary Action Group Against Slavery, All Saints Educational Trust, Randle Oliver and Ghana School Aid

Page 4: New Schools at Guomo and Cheshugu

Page 5: New School at Wayamba

Page 6: Norwich School, Norfolk Global Neighbours, School Dinners and Norfolk Constabulary training centre

Page 7: WULUGU Covid advice and helping hand for boreholes and update of Covid in Ghana

Page 8: Sam the skeleton and urgent future investment needs

SOME THANKS - BUT WE CAN'T EVER SAY THIS ENOUGH

We need and appreciate everyone that is part of our staunch support team. Please feel proud—we are achieving so much.

Margaret Waller, who sadly died in October, for her strong support and friendship over many years. We always felt privileged to have her help as she was involved in so many things.

Rotary clubs for always lifting our morale together with astonishing generosity.

David Yarham for matching his years with pounds.

Vassili for friendship and kindness.

Invaluable help from **The Sergeants**.

Jim, for continued support and thoughtful comments that help so much.

Mike and Val Child—with the patience of saints editing this newsletter.

Little Melton Mothers' Union—wonderful ladies.

Denis for his excellent past work on our web site and Keith and Sue for taking it on now.

Kitchen Table Charitable Trust, Wymondham and Seaburn Rotaries, Stephen, Jim for funding life-saving boreholes at a critical time.

The Robinson and Dixon Trust for so much help.

Stephen and Eileen for being part of WULUGU for so many years. Stephen died in October. We will miss him enormously. His kind critical help has been invaluable to our work and he and Eileen have supported us strongly.

Our UK and Ghanaian management teams who work so hard and cheerfully.

Norwich Cathedral Alms Committee for desks.

St Chad's Church, Sunderland, and dear **Muriel**.

Dorothy, Kath and all whose monthly donations make such a difference.

Victoria Tuck, ex-pupil at Hethersett Old Hall, who obtained the contents of the 'second hand uniform shop' and sent 120 wonderful school dresses to Gambia.

Sincerest apologies if you have been missed from this list.

THANK YOU! LYNNE SYMONDS

TRADE AID AND WULUGU Tackling Infection and Poverty Together!



Early on in the Corona virus problem we had a surprising call from Ghana to let us know that, while our Vocational schools for girls were closed, some of the tailoring students were using Trade Aid machines at home to make face masks and making them available to villagers. They charged a little, so helping their families during the most difficult times. This is one of many examples of ways in which Trade Aid generosity is helping the world in sometimes unexpected ways.

Trade Aid staunchly support us. Earlier this year we were able to help at Walewale Vocational School. These are the tailoring kits - as you see - being well used. Walewale was the first vocational school we set up - now there are 1,000 students. This is also one of the schools that we were begged to allow boys into. This is to protect them from unscrupulous bands who come into Northern villages and promise the boys who have no work that they will get rich if they help them achieve their aim of preventing education for girls. It was a really tough, but right decision to help these boys.

John, the head-teacher, is a key member of our WULUGU team in Ghana. He really transformed Walewale Vocational school. I am so pleased that we have been able to help John as he works hard to give his students the best possible start

in life. His students' courses all include literacy, numeracy and computer skills. Many then go on to set up their own small business or into employment in local government, hospitals or hotels. Some progress further with their education and continue to University.

Trade Aid are continuing their support of WULUGU although, as with most charities, their income has fallen badly. Currently we have tailoring boxes and a carpentry box in the pipe-line together with two computers with screens and printers. These will be used by many young people as they learn the skills they need to set up in their own businesses.



WORKING WITH THE ROTARY ACTION GROUP AGAINST SLAVERY (RAGAS)

Many of you will have heard about this ambitious initiative. It began three years ago and has already achieved a great deal in reducing modern slavery.

We are honoured to be supported by RAGAS who have used our work in Ghana, particularly with girls and women, to show how carefully planned and targeted intervention can stamp out slavery. We feel so honoured by this. In November they presented us with a cheque for £1,600. This was largely due to Mark Little, a Norwich Rotarian, raising donations from talks

Over the years, we have talked with many Ghanaian parents who were invariably saddened by what they saw as a situation they could do nothing about:

'What can I do. We are starving. I have to sell my daughter for four cows. At least she will be fed'...

In reality, the traded girls were badly treated. Given space on a floor to sleep and a minimum of food. Nothing else. Often abused. Our seven Vocational schools for girls have made an outstanding difference. When we built Sawla, near Cote D'Ivoire border, families made tremendous efforts to bring their girls back from there as they recognised that this was an invaluable opportunity for the girls that would benefit the whole family. The headmistress told us:

'Before our school, so many girls came home to die, they were so sick. Now life has hope..'

The King and Over-lord of the Mamprusi Kingdom; Naa Abdulai Mahami Buahagu Sheriga, said, in his citation to WULUGU:

'You have rescued so many girls from poverty, slavery and early marriages.'



**Rotary Action
Group Against
Slavery**



Although focused on the world's enslaved and at risk children, RAGAS recognises this is but part of the global challenge. It therefore works closely with organisations dedicated to ending human trafficking and the enslavement of adults. There are 1.3 million Rotarians internationally so the movement has great strength.

THANKS TO ALL SAINTS EDUCATIONAL TRUST



All Saints Educational Trust have again made it possible for more girls in our Vocational Schools to have the practical experience that is essential to their training. We can't thank them enough.

The support, friendship and trust of ASET, who really understand the importance of giving illiterate girls a real chance, is invaluable to us.

RANDLE OLIVER

A True Friend of WULUGU



We have many wonderful supporters who make our achievements possible. We want to tell you a little about Randle Oliver, a Seaburn Rotarian, who died in June just a few days after sending us a donation to help with a bore hole and shortly before his 95th birthday.

Randle was a member of the RAF ground crew who helped clear the way for a Typhoon squadron following on from the assault on the beaches of Normandy, having signed up in 1943. He continued to work with Normandy veterans for many years. He was awarded the Legion d'honneur medal by the French Government.

Randle was also a talented artist and calligrapher. Many of his paintings, particularly of local North-East scenes, were reproduced for sale to support local charities. He was a kind, thoughtful and truly distinguished gentleman, embodying the spirit of Rotary International, an active member of Seaburn Rotary and a true friend of WULUGU.

Ghana School Aid

Helping Ghana's schools

Working with Ghana School Aid (GSA)

GSA is a small charity which aims to help improve education in Ghana. In recent years its work has moved from the Southern, more well-equipped districts, to our neglected North.

We were pleased to meet, electronically, the GSA representative in the North Salifu Baaku; We hope that he and Solomon can learn from and support each other, so strengthening the impact of our work.

The GSA Southern representative, Kofi Oheni is a long term friend.

GUOMO COMPLETED - BUT CURRENTLY CLOSED BECAUSE OF COVID REGULATIONS

In our last newsletter we reported on our new school building under construction at Guomo with thanks for funding from Fondation Eagle. We opened Guomo School in January - a triumph but all schools shut in February so these children can't wait to get back to their new school!



CHESHUGU PRIMARY SCHOOL

A Crumbling Death Trap

Cheshugu primary school was 'housed' in dangerous local mud constructions that can melt away or crumble in the rainy season. The existing collapsing three rooms were described to us as a 'death trap' by the PTA chairman. He, in a joint letter, from himself and the local Chief, told us:

'Efforts to get NGOs, Government Organisations or individuals to support our community and put up a safe block have yielded nothing'

They were continually frustrated and felt that no-one cared. All their efforts came to nothing. They have turned, in desperation, to us and saw us as the only way to establish a fairer future for their many children. The community was



A death trap crumbling before our eyes



A lone pupil hoping to study here soon

obviously doing their very best and using their very limited sources for the benefit of all their children.

With Fondation Eagle's generous help, a new six room primary school with store and toilets was built for the primary classes.

The village, staff and pupils are mainly Muslim. At the opening Durbar (celebration) both the Pastor and the Imam will be there and conduct the opening and closing prayers. Their presence shows approval of education, which was, for many years, limited, particularly for girls. Our work with similar communities shows that families respond to a real school by sending all their children, including their daughters, to school. This interfaith co-operation is refreshing in a world with so much dissent

The build was finished 29th March 2020. Due to COVID-19 we have been unable to hand over the school to Ghana Education Services and the pupils have not returned. They too will be included in the Schools Dinner Programme (see page 8). It is a good idea for the pupils but it leaves the District with even less funds to build new schools or supply books or desks.

Ms Abiba Saak, District Director of Education, along with many others, thanked us:

The school block provided will go a long way to add to effective teaching and learning and we promise to take good care of the structure in maintaining utmost care. The Kumbungu District Education Directorate, the entire staff and pupils of Cheshugu D/A Primary School and Chief and people of Cheshugu are grateful for your kind gesture'

WAYAMBA PRIMARY SCHOOL

A School Within the heart of a Caring Community



The jumble of collapsing structures



This has been a very successful school, within the heart of a caring community. Its alumni include the present head teacher, Mrs Joana Akofo, nurses, teachers and many others helped out of poverty. But even with a healthy roll of over 500 pupils, an active PTA and a supportive local chief determined to break the traditional early marriage of girls, the school was facing closure because of its dilapidated and dangerous condition.

When the WULUGU team visited recently, they saw a jumble of collapsing and half-built structures. Solomon saw that, by stepping in now, we would be able to transform the school and the outlook for the village communities that use it. We were relieved when The Clive and Sylvia Richards Charity agreed to help us with half the funding, at a time when most donors in UK ceased to operate or diverted all funds to the terrible virus threat. WULUGU was fortunate to be able to fund the balance.

The success of our work is best described by Joana Akofo, the Headmistress. Extracts from Joana's letter of 10th July follow:

"I write on behalf of the children...to say thank you to for the renovation and completion of the school blocks.

....Upon seeing and hearing of WULUGU. and the enormous work you have done in communities of Northern region, we decided to knock on your doors and thank God you have come to our rescue.

Your team, lead by its leader Mr. Solomon Nachina and supervised by Mr Adam Lansa and Isaac Kanwille are a solid team who do not compromise on the quality of their work.... They are everyday on site with the workers ensuring nothing goes wrong. Their work ethics are second to none.

I want to say that the restoration of the school could not have come any time better than now that we have COVID-19 demoralizing everything yet your rescue has given us hope for the future and a reassurance that we cannot give up on our hopes and dreams. It will increase the enrolment, improve the hygiene conditions of the learning process and well as motivate the teachers to carry out their work with confidence and dignity.



Renovation work in progress

...Not only have you physical renovated the blocks but you have renovated the lives of so many children who would have dropped out of school and especially the Girl Child who would have married early or ran to the South to engage in menial jobs and it has given the PTA a new awakening to work harder for the success of the school....

I say thank you and may you continue to thrive and be successful in all that you do and please continue to support communities like us for without your interventions like this, generations will slip back into ignorance, poverty and doom. Thank you and best wishes for the future.

Yours truly Joana Afoko Headmistress"



The finished school - Covid prevented pupils arriving until January 2021

The new school is complete but sadly waiting for the return of the children. The government has ruled that during the Covid crisis, the school should stay closed until the new year. But this caring village will patiently watch over their new school, keep it safe and welcome the students back in January.

Wayamba has been built to allow the extra space needed due to the current Covid problem. Large verandas will allow desks to be placed next to the (glassless of course) windows. The government has ordered that twenty-five is the maximum number per classroom and is organising a two-shift system. There are apparently enough teachers for this to happen.

THE NORWICH SCHOOL PUPILS LINK UP WITH WULUGU HIGH SCHOOL



We are delighted that sixth formers from The Norwich School have begun to find out more about their peers at Wulugu High School. This is the first time we have linked a UK school with Wulugu HS since our early work with Hethersett. We know all involved, both in Ghana and UK will learn so much from this initiative.

It is easy to forget the depth of poverty that still affects even Wulugu Senior High School, one of our most successful schools. Things are improving tremendously at this school, but poverty still has a substantial impact on the 2,000 students, their families and their teachers. The informal survey below of thirty-nine Wulugu High School parents, just reminds us why we need to carry on with our fight to defeat poor education and poverty and its far-reaching negative impact on lives:

- In all but two of the families the parents were illiterate
- Most were subsistence farmers
- All reported difficulty in paying for food and schooling
- Some of the children did not have any schooling
- Absenteeism was common as they needed to find food or ways to pay
- Income most expressed as number of sacks of grain or other produce
- The headmaster, as others before him, is constantly frustrated that hunger lowered the potential and achievement of many students



NORFOLK GLOBAL NEIGHBOURS

Norfolk Global Neighbours is a new group aiming to help the public see that their donations can be used effectively to make valuable changes for less advantaged communities across the world. We were pleased to be invited to be part of this, although we have never been given any funding by the government or the major charities. We know that we work miracles with relatively small amounts - and that's thanks to our supporters, including you.

Thank you so much.

SCHOOL DINNERS

No chips just wholesome food!

Since 2017 the Ghana Education Services, realising that it is hard to study on an empty stomach, has introduced 'feeding schemes' into some of the most deprived schools including several in the North. The District is instructed 'to set them up' but they do not receive funding from central government to pay for them.



It has to be low cost. A mud kitchen is built, wood and water collected and a couple of local ladies are employed to cook nutritious meals five days a week. No chips here. Dishes of locally sourced rice, yam, beans, lentils and vegetables are cooked daily in huge cauldrons and served piping hot. All the children in school line up, with their own bowls (and some-times spoon!) to get a generous portion of today's dish. No choice but none left. All the bowls are literally licked clean.

These school dinners are most popular with the families, providing one good meal a day, so attendance at school increases both in numbers and regularity. They also add a little to the local economy for the suppliers of wood, water and farm produce. Increased attendance at school requires more staff, desks, books, paper and pencils but the District budget, already pitifully small, cannot stretch to this. The classes are even more crowded, with fewer desks and less well equipped. The need for extra classrooms keeps growing.

This is where WULUGU endeavours to step in and give effective help.

NORFOLK CONSTABULARY TRAINING CENTRE - "THE WULUGU ROOM"

Our Wulugu work began at Hethersett Old Hall school, near Norwich. Girls made friends with girls at Wulugu and both groups learned so much from each other. Students, staff and governors have continued to support us. Norfolk Constabulary are using the school now as a training Centre. They wanted to retain some of the history, and have named a room 'The Wulugu Room' with a plaque commemorating our work.

WULUGU PROVIDES A HELPING HAND WITH ADVICE & CLEAN WATER



Power point Covid presentation in local village



Dug-outs often run dry in the dry season



Searching for water after dug-outs dry up

We report, on the front cover how our local team, very early in the covid epidemic, took the initiative to broadcast covid awareness. Then they sent an apology to us that they hadn't told us. They knew that WULUGU is highly trusted and respected, so felt they had to help.

One of the team's messages was clean water for regular hand washing. In the rainy season no problems - ponds or "dugouts" fill up with water and for a short time provide clean water for washing drinking and livestock - until they gradually become polluted and then disappear in the dry season.

So we decided that we really needed to try to help. Our focus is and always will be to "relieve poverty through education". But this was a frightening situation.

They asked us to help by funding boreholes, providing fresh clean water in strategic villages so that basic sanitation would be possible.

WULUGU provided a helping hand for clean water supplies by financing three boreholes.

The long-lasting effect of clean water from our new boreholes will improve health and wellbeing compared to the dugouts they drink from now which usually infect them with worms and water borne disease as well as cholera and typhoid.

The impact of these boreholes will, in the long run, sustain their livelihood and provide them with sustainable drinking water long after COVID-19 is over.



New WULUGU borehole, tank and taps



AN UPDATE ON COVID IN GHANA & THE NORTHERN REGION

Since the onset of Covid Northern Region has recorded a cumulative total of 547 cases. As far as it is possible to really know there are no active cases in the region at present. This surprisingly low incidence is reflected across Africa. WHO and researchers point to a number of possible reasons for this low incidence: 60 percent of people are under 25 and 40 percent under 14; the high incidence of many infectious diseases may provide some immunity; the official numbers remain low but many more may be infected; the warm climate; family culture is inclusive of older persons instead of care homes. An additional factor for northern Ghana may be its extreme remoteness.

However, irrespective of these low figures, everyone is taking the necessary precautions - hand washing, hand sanitising and social distancing. In these remote communities, the new rules go completely against the traditional, normal behaviour of close contact and sharing everything, even toothbrushes.

Churches and social gatherings are still limited with all the protocols in place as well as social distancing seating arrangements - many have decided not to open until January 2021. Schools were closed early on and although schools opened in October to older pupils, junior schools remain closed until January 2021.

In the long term, Ghana expects the curve to rise and this will put pressure on the medical facilities. Medical services in the communities we want to help are very poor or absent. Witch doctors will be called in. There is a hospital in Tamale that does its best. Our past work in helping the establishment of a medical school here will become even more important. But medical help is unlikely to reach the remote villages. Sickness and infection will increase if communities do not improve on certain areas of livelihood such as good drinking water and observing the protocols put in place.

SAM THE SKELETON ARRIVES SAFELY AT HIS NEW HOME IN TAMALE



As reported in last year's newsletter Sam the Skeleton used to live at Hethersett Old Hall School.

He is now well settled in his new home in The Islamic Secondary School, Tamale. This school has a very good reputation for science teaching

Dr Mary Monney, the second ever female urologist at the main teaching hospital in Accra, did us the honour in presenting Sam to the school. They are absolutely delighted and feel that this will encourage even more students to study science to higher levels.

Thanks to everyone involved in getting him there! And still wearing his/her? School hat !!!!

URGENT NEEDS - CAN YOU HELP?

We badly need your help to: provide desks and vocational school equipment and to carry out small repairs before they become major and expensive. We also would be very grateful for help to drill more boreholes. **And we have many building projects.....:**

BOAKUDO PRIMARY SCHOOLS

(Build Lower Primary School & Repair Upper Primary)



Upper Primary

The school is housed in a dilapidated mud structure with no roof and broken walls. It is dangerous and quite the worst school we have seen. Pupils still flock to this dangerous school.

Repair Cost Upper Primary £9,000.
Build Lower Primary. £32,000. Toilets £6,000

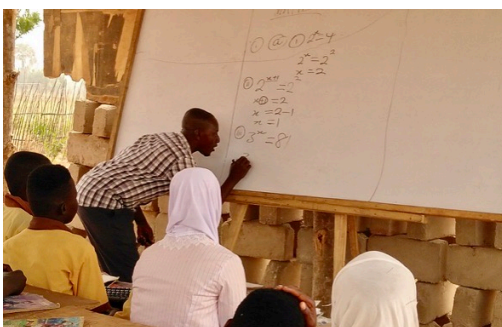


Lower Primary

We hope that you will help us to achieve this. Immediate beneficiaries: Approx 350 children.

NWOGU PRIMARY

(Build Primary school, store/teacher room and toilets)



It has a population of 265 pupils. It consists mainly of metal sheets on supports. The school is totally inadequate. Urgently, a six-room new Primary school is needed. They also, as all schools do now, need toilets. (School toilets are still a relatively new concept.) The District Chief Executive has pledged to build toilets if we build the school.



Cost Primary school, store/teacher room and toilets: £49,000

We hope that you will help us to achieve this. Immediate beneficiaries: Approx 400 children. We have similar, urgent projects on our list for Sanga and Zanzugu Yipala Schools.

HOW TO CONTACT US

We can be contacted at WULUGU Project, Church Farm, Great Melton, NORWICH NR9 3BH Phone: 01603 810748
E-mail: wuluguproject@gmail.com or The Chair, Jane Scott Phone: 01603 453750